



LANCASTER COUNTY, PA
Economic Development Company

Livable Communities

Thursday, January 28, 2016

Moose Lodge #596

Elizabethtown, PA

Where Tradition

BECOMES INNOVATION

Livable Communities

Economic Development Company

- Founded in 1960
- 501(c)6

EDC Finance Corporation

- Founded in 1986
- In 2008 became Certified Development Company
- 501(c)4

Where Tradition

BECOMES INNOVATION

Livable Communities

Vision: To elevate the economic strength of Lancaster County by becoming the business investment community of choice.

Mission: To enhance the economic well-being of Lancaster County by bringing together business resources, capital and government for selective, measurable and sustainable growth.

Where Tradition

BECOMES INNOVATION

Livable Communities

Trends in Economic Development

- National environment is highly competitive
- Intentional not reactive – what do we want our economy to be in 5-10 years?
 - Data-informed
 - Targeted – not all things to all people
- Economic developers have to be generalists with key areas of expertise aligned with community goals

Where Tradition

BECOMES INNOVATION

Livable Communities

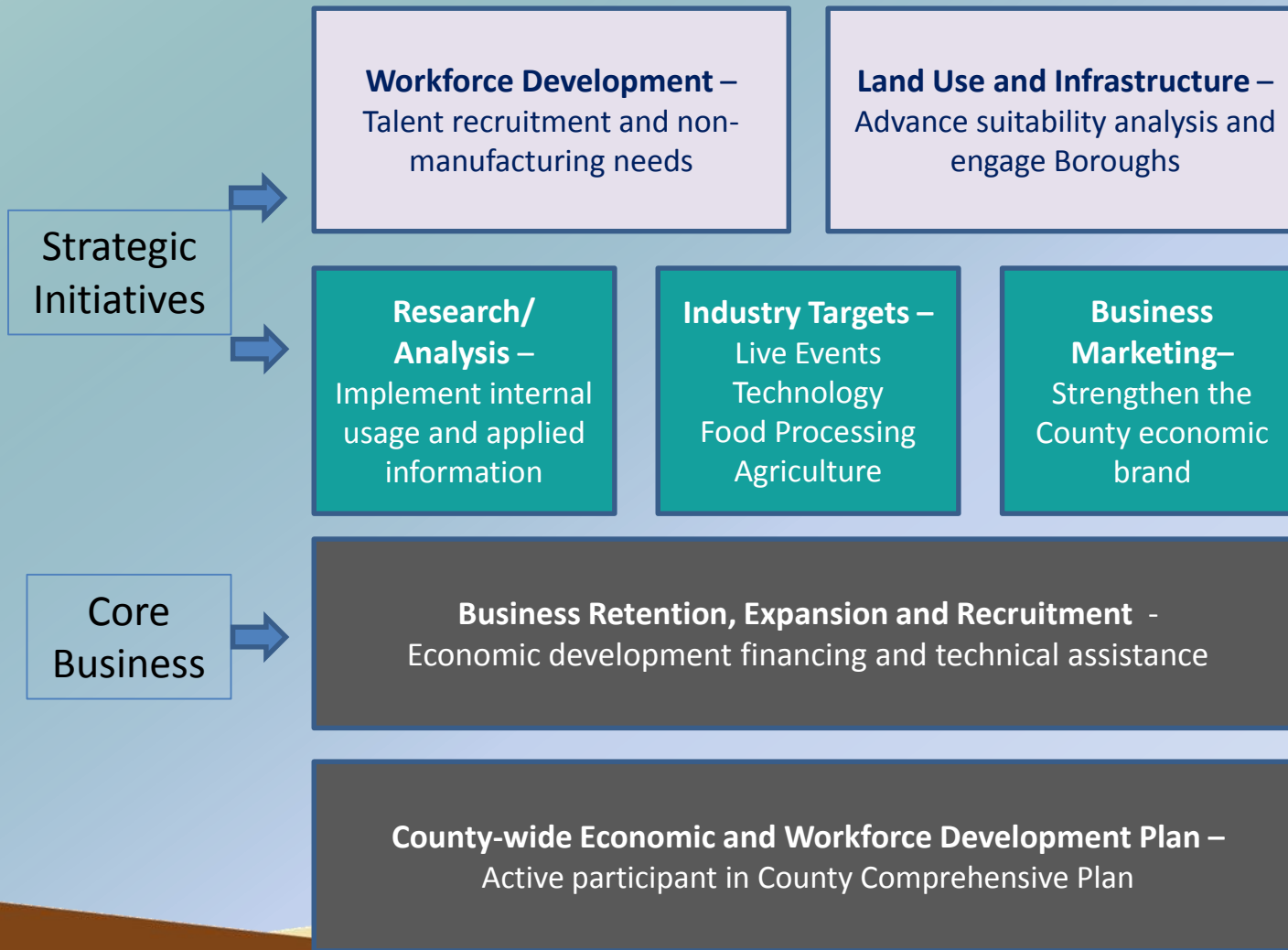
Trends in Economic Development

- Key issues today – here, in PA and nationally
 - Human capital/labor force top priority
 - Demographics shifting
 - Infrastructure needs – shovel-ready land, transportation, stormwater/utilities, housing
 - Partnerships
 - Quality of life – livable communities – is increasingly important

Where Tradition

BECOMES INNOVATION

Livable Communities



Where Tradition

BECOMES INNOVATION



LANCASTER COUNTY, PA
Economic Development Company

Thank You.

Lisa Riggs, President
Economic Development Company
lriggs@edclancaster.com