

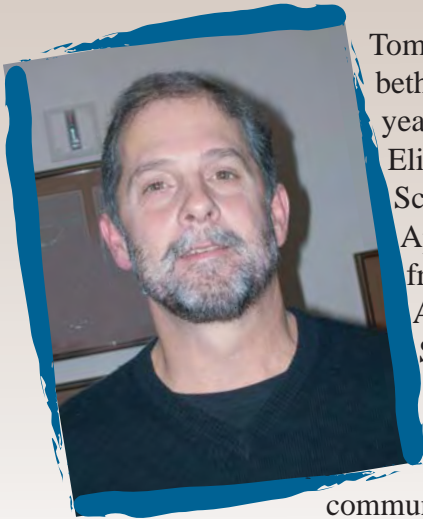
Elizabethtown

BOROUGH BULLETIN

BOROUGH COUNCIL TRANSITION

Borough Council begins the year 2008 with a historic transition and new faces. Three of the six-member Borough Council are newly elected members ~ a fifty-percent turnover of Council membership in one election. According to Borough Manager Peter Whipple, this year presents the most transition that Borough Council has experienced in his thirty years with the Borough.

The new Council Members are Thomas Shaud (Ward 1), Jeff McCloud (Ward 2), and Phil Clark (Ward 3). They replace Elie Schmidt (Ward 1), Ken Reighard (Ward 2) and Ralph Neidig (Ward 3) ~ none sought re-election as their terms expired.



Tom Shaud has lived in Elizabethtown for fifty-three (53) years. He graduated from Elizabethtown Area High School and received an Applied Sciences Degree from the Spartan School of Aeronautics in Oklahoma.

Shaud is currently a Water Plant Operator for the Elizabethtown Area Water Authority. His community activities include the

Elizabethtown Republican Committee, the Elizabethtown Fire Department, Christ Lutheran Church, and Ashara Lodge #398 F&AM. Shaud identifies traffic congestion, police protection, and downtown development as major issues facing Elizabethtown. Shaud and his wife, Cynthia, have two children, Aubrey Anna and Afton Leigh.

Jeff McCloud moved to Elizabethtown in 2000. He holds a Bachelor's Degree from the Indiana University of Pennsylvania. McCloud is currently the marketing and communications coordinator for the Pennsylvania State System of Higher Education. He is a former newspaper reporter and editor, including former editor of the

Elizabethtown Chronicle. He has served on the Elizabethtown Borough Zoning Hearing Board, is a member of Christ Church United Church of Christ, served as a deacon for three years at Christ Church and currently serves on the Outreach and Finance committees. Mc-



Cloud also sings in the Elizabethtown College Community Choir. When asked to identify major issues facing Elizabethtown, McCloud says "I've had the pleasure of working in many communities in south central Pennsylvania thanks to my job as a newspaper reporter. I can truly say that Elizabethtown has vision that keeps it moving forward. Projects such as the extension of West College Avenue, the Downtown Master Plan and the Elizabethtown train station illustrate this – and they are vital to ensuring the long-term vitality of the community." McCloud and his wife, Elizabeth, have two children, Nathaniel and Maxwell.



Phil Clark has lived in Elizabethtown all his life. He graduated from Elizabethtown Area High School and is currently the Facilities Manager at Christ Lutheran Church. He is an active member of Christ Lutheran Church, the Mount Tunnel Cemetery Board, past board member of the Eliza-

bethtown Child Care Center, and the Elizabethtown Jaycees. Clark and his wife Beverly have three children, Joshua, Jessica and Christopher.

WATER QUALITY REPORT FROM EAWA



Do you ever wonder about your tap water and whether it is safe to drink? The Elizabethtown Area Water Authority (EAWA) thinks about it constantly and tests it regularly to ensure you receive a dependable and safe supply of drinking water every day.

In 2007, the Authority spent about \$15,000 with an independent laboratory to monitor the quality of its water by conducting more than 400 tests for a variety of contaminants. The lab tested for microbiological contaminants such as coliform bacteria, radioactive contaminants such as alpha emitters, radium and uranium; inorganic contaminants such as barium, copper, lead and nitrates; and disinfection by-products such as trihalomethanes and haloacetic acids. For some contaminants, such as coliform bacteria, tests were conducted multiple times throughout the year.

In 2008, the Authority's costs for testing will triple to about \$46,000 to comply with three new testing requirements from the Environmental Protection Agency (EPA). Under the Agency's Unregulated Contaminate Monitoring Rule 2, tests will be conducted for 13 more chemical contaminants that are currently not regulated by drinking water regulations. Although it is expensive, regular testing is the only way to be sure that the water provided to you by EAWA is safe for consumption. We strive to provide you with top quality water and ask that all citizens help protect our water sources. For additional information about our water testing, please call EAWA at 717-367-7448.

WHAT CAN WE DO TO HELP?

To prevent storm water pollutants, people can properly dispose of hazardous substances such as used motor oil, cleaning supplies, and paint; use pesticides, fertilizers and herbicides properly and efficiently; install innovative storm water practices on residential properties, such as rain barrels or rain gardens, that capture storm water and keep it on site instead of letting it drain away into the storm system; report any discharges from storm water outfalls during times of dry weather; pick up after pets and dispose of their waste properly; and store materials indoors that could pollute storm water.

For more information from the Pennsylvania Department of Environmental Protection visit www.dep.state.pa.us and type in keyword "stormwater."

MARS SNACKFOOD US MAKES CONTRIBUTION TO COMMUNITY

At the November Borough Council public meeting, Mars Snackfood US announced their contribution of \$125,000 to Elizabethtown Borough. These funds will be used to mitigate traffic concerns for residents and businesses during the expansion of the Mars Snackfood facility. Initiatives supported by this contribution include the creation of a permanent parking lot, funding for temporary traffic direction at the square and other locations during particularly busy times, and the purchase of pre-emption devices to ensure that emergency vehicles can traverse affected areas as quickly as possible.

Gary Kroot, Plant Director of the Mars Snackfood US Elizabethtown site, says "We are excited to be in Elizabethtown. As good neighbors we are working to ensure that our construction will not be too disruptive. By working with the Borough Council, we have found opportunities to minimize the impact while ensuring that we do not impede the safety of residents."

Borough Manager Pete Whipple echoes this sentiment. "Mars has been an outstanding partner. From their investment in our community, to their support of the Master Plan, we have found them to be open to options that are good for all our citizens."

Mars, Incorporated is investing over \$70 million to increase the capacity at the Elizabethtown site to handle the increased demand for Dove Brand Chocolate. Part of this investment includes the construction of new production lines. This work has required the closing of West Bainbridge Street, a major thoroughfare in town; traffic has been rerouted during construction.



Gary Kroot, Plant Director of Mars Snackfood US Elizabethtown, presents a check to Council President Ken Reighard.

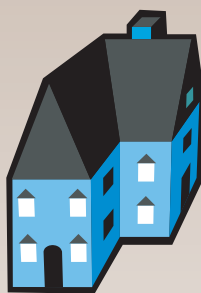
NEW TRASH AND RECYCLING FEES

Beginning January 2008, the Borough's residential trash and recycling fees increase to \$160 per unit per year (billed as \$80 per unit every six months). A 5% discount applies for a total fee of \$152 per unit for the year if paid in full by January 31, 2008.

The Borough accepted bids from haulers for a three-year contract for trash and recycling collection services beginning in 2008. The low bid was awarded to the Borough's current hauler, Penn Waste, Inc. of York. For more information about Penn Waste, visit their website at www.pennwaste.com or call 717-767-4456 for their business office.

RESIDENTIAL RENTAL UNIT INSPECTIONS

Since the program's inception in January 2006, the Borough has completed over 1,800 inspections of residential rental units registered with the Residential Rental Unit Licensing and Inspection Program. These inspections were conducted over a two-year period and completed by the end of December 2007.



Beginning January 2008, the Borough's Codes Compliance Official will begin re-inspecting all residential rental units as part of the two-year inspection cycle. Owners of rental units are reminded that code deficiencies noted on their inspection field report during their latest inspection must be corrected prior to their next inspection. Owners of residential rental units that were inspected in 2006 should expect to be contacted by the Borough in the near future to arrange an inspection date and time.

CHECK OUT OUR WEBSITE

Please watch for details on Kraft leaf bag distribution as well as other services provided by your municipality, print a zoning permit application, read the latest public meeting minutes or get an update on the West College Avenue project all on the Borough's website at www.etownonline.com or call the Borough office at 717-367-1700 for more information.



2008 RECYCLING SCHEDULE

CHRISTMAS TREE COLLECTION

Remove all tinsel, decorations and bags from the tree before placing it at the curb on **Saturday, January 12.**



DROP-OFF CARDBOARD SCHEDULE

Second Saturday of every month / 8 AM- Noon

Lot across from the fire department at 171 N. Mount Joy Street. Borough residents only – please bring identification.

Saturday, January 12
Saturday, February 9
Saturday, March 8

Saturday, April 12
Saturday, May 10
Saturday, June 14

WOODY WASTE / BRANCHES

Curbside collection the second Saturday of every month.

Tie with string in bundles less than 4 feet in length or place in can or other container. Please keep bundles or containers less than 40 pounds in weight.

Saturday, January 12
Saturday, February 9
Saturday, March 8

Saturday, April 12
Saturday, May 10
Saturday, June 14

WHITE GOODS & TIRES

Curbside Collection

Extra Service Tag required for each item - \$12.00 white good /appliance and \$2.00 tire.

Tags sold at the Borough Office only.

Saturday, May 3

NEW YARD WASTE COLLECTIONS

Curbside Collection

Place leaves and other yardwaste, including acorns; pinecones; pine needles and grass in biodegradable kraft leaf bags. No sticks please, they should go with the Woody Waste Collection. Please do not tape the kraft leaf bags closed, instead roll the tops closed.

Saturday, April 5
Saturday, May 10



LEAF COLLECTIONS - {LEAVES ONLY}

Curbside Collection

Place leaves in biodegradable kraft leaf bags available free to residents. Please put **ONLY** leaves in the bags, **NO** sticks, acorns, pinecones or other yard waste. Please do not tape bags closed, instead roll the tops closed.

Same day as regular trash collection.

Week of October 22, 23 & 24

Week of November 5, 6 & 7

Week of November 19, 20 & 21



RECOGNIZED FOR SERVICE

On December 5, 2007, Borough Council and staff recognized Borough Manager Peter Whipple for thirty (30) years of service with Elizabethtown Borough. Whipple began his employment with the Borough in 1977 as a student intern under the direction of Borough Manager Mike O'Keefe.

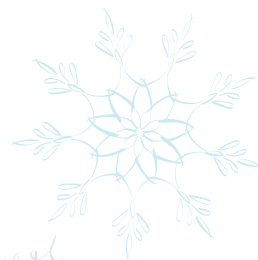
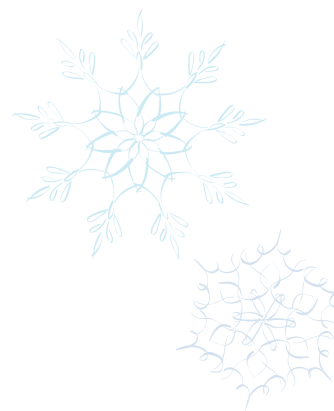
Former Borough Council members Ken Reighard, Ralph Neidig, and Elie Schmidt were recognized for their service during their final public meeting on Thursday, December 20, 2007 with a proclamation presented by State Representative Dave Hickernell.



PLANNING COMMISSION NEWS

Planning Commission member Neil Ketchum received a certificate of completion for attending a 10-hour "Course in Community Planning" provided by the PA Association of Boroughs and the Pennsylvania Municipal Planning Education Institute (PMPEI).

Phil Clark, Borough Council member and former Planning Commission Chairperson completed the Fall 2007 Lancaster County Master Planner Course. The goal of the course is to encourage participants to apply the knowledge they gain to promote and sustain "smart growth" communities. Upon completion of the course, Clark was recognized and received certification as a "Master Planner" by the Lancaster County Planning Commission.



Published Quarterly by Elizabethtown Borough
 Printed on Recycled Paper
 Copy should not be duplicated without permission
 Editor: Roni Ryan



PAID
 U.S. Postage
 Elizabethtown, PA
 Permit No. 007

Elizabethtown Borough Bulletin
 600 South Hanover Street
 Elizabethtown, PA 17022
 (717) 367-1700