

# ELIZABETHTOWN

## BOROUGH BULLETIN

## Autumn Greetings

Autumn/Winter 2019/2020

NEWS FROM THE BOROUGH OF  
ELIZABETHTOWN, PENNSYLVANIA

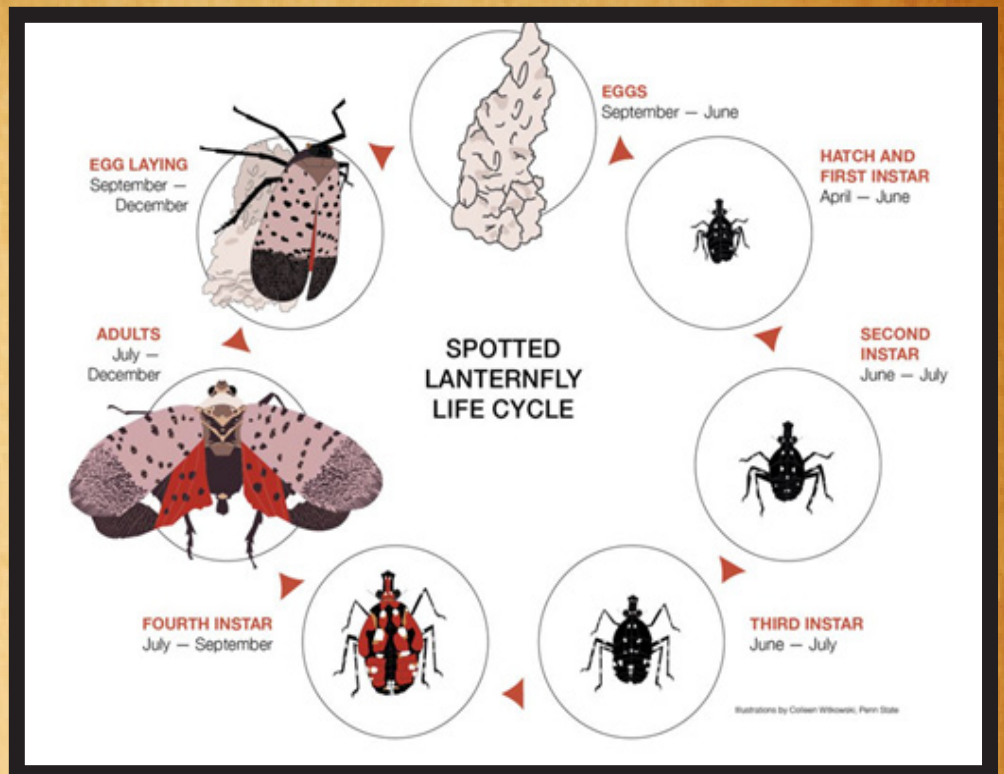
### Spotted Lanternfly

Spotted Lanternfly (SLF) is a destructive invasive pest that does not bite or sting. It is threatening agricultural, timber, and ornamental industries, and the plants in your backyard. Together, we can take action to limit the spread and damage from this pest.

Helpful tips for homeowners to limit the spread and damage of the SLF include:

- If you find a spotted lanternfly outside the quarantine zone, collect and report immediately with the online reporting system at [extension.psu.edu/spotted-lanternfly](http://extension.psu.edu/spotted-lanternfly) or by calling 1-888-4BAD-FLY. SLF found within the quarantine zone do not need to be reported.
- Don't let SLF spread. Check your car, outdoor equipment, etc., for SLF eggs, nymphs, and adults when moving in and out of the quarantine zone. Don't move firewood.
- Help reduce SLF populations by scraping egg masses from trees, houses, and anywhere else you find them. Destroy mobile stages of SLF by crushing them.
- Band trees to trap and kill nymphs in the early spring.
- Remove tree-of-heaven, the preferred host for SLF.
- If needed, protect your trees by applying insecticides using foliar or soil drench methods or consult a local tree care service. Always follow label instructions when applying any pesticide.

\*For more information on SLF and ways to stop the spread, visit the Pennsylvania Department of Agriculture website: [www.pda.state.pa.us/spottedlanternfly](http://www.pda.state.pa.us/spottedlanternfly) and the Penn State Extension website [extension.psu.edu/spotted-lanternfly](http://extension.psu.edu/spotted-lanternfly).



Thank you for  
**your hard work**  
and **dedication!**

A sincere appreciation to all the Elizabethtown Borough board, authority, and commission volunteers for their hard work and dedication in 2019. This hard work helps to keep Elizabethtown a thriving community and a place for strong business and beautiful and safe spaces.

**Planning Commission**

Dr. Kyle Kopko  
David R Grey  
Everaldo McDonald  
Jenni Woodworth  
Christine Seitz  
Tyler Hoover

**Zoning Hearing Board**

Rick Jones  
Roger Powl  
Eric E. Kopp II  
Dieter Ott

**Elizabethtown Industrial Development Authority**

Robert Dolan  
Jeffrey K. McCloud  
Joseph Kanfer  
Dr. C. Dale Treese

**Civil Service Commission**

Michael Hensch  
Jamie Rowley  
Tom Mulleavy

**Elizabethtown Area Water Authority**

Dr. C. Dale Treese  
Jeffrey K. McCloud  
Richard P. Sheidy

**Elizabethtown Area Community Services Authority**

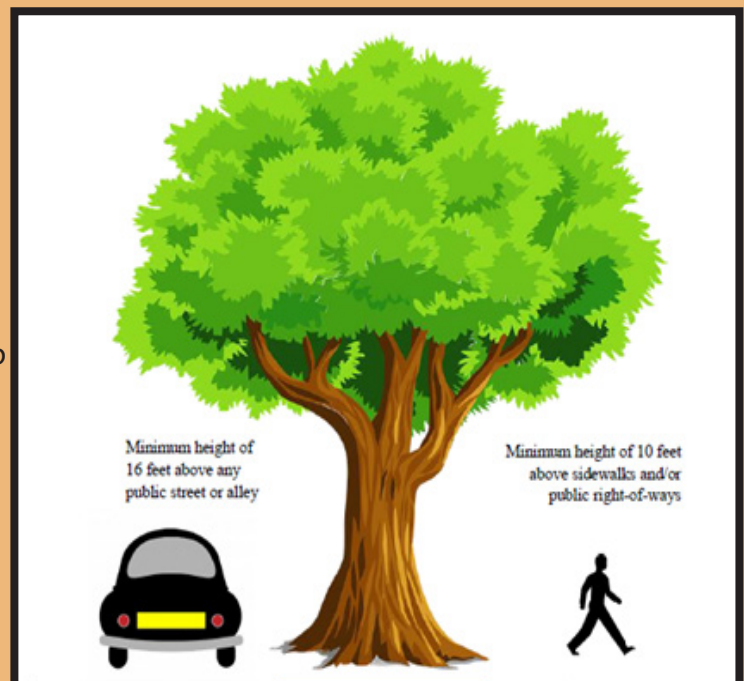
Meade Bierly  
Bill Troutman

**Greater Elizabethtown Area Recreation & Community**

**Services (GEARS)**  
Howard Kroesen  
Meade Bierly  
Phillip P. Clark

**Maintaining Trees, Shrubs  
and other Vegetation**

Residents are reminded to maintain trees, shrubbery, and vegetation to ensure full clearance for use of sidewalks and streets. A minimum height of 10 feet of clearance above sidewalks and public right-of-way and a minimum height of 16 feet above any public street or alley must be maintained. Please keep vegetation trimmed to prevent encroachment and permit full access to a sidewalk or public street/alley. The minimum clearances allow safe access to sidewalks for pedestrians, prevents visual obstructions to drivers, upcoming stop and traffic signs and allow vehicles to pass under trees without damaging the vehicle and the tree.



## **MS4 – What is an Illicit Discharge?**

An illicit discharge is defined as any discharge to the municipal separate storm sewer system (MS4) that is not composed entirely of stormwater. Non-stormwater related discharges often occur when illegal connections are made to the storm drain system from residential dwelling units, businesses or commercial establishments. Other sources of illicit discharge include intentional dumping of any material in storm drains. Illicit discharge results in contaminated liquid or materials entering the storm drains or directly entering local waterways before being treated.

Individuals or establishments conducting illicit discharge practices are subject to enforcement measures that include criminal and civil penalties. Please call the Borough Office at 717-367-1700 if you have questions, would like more information, or to report possible illicit discharge.



## **Disposal of Grease, Fats and Oils**



Help us keep the Wastewater Treatment system and your plumbing running smooth by correctly disposing, used or unused, cooking oil, fat and grease. Please refrain from draining cooking oil, fat and grease into your plumbing system. Over time this material can build up, both in and outside of the house, and can cause a back-up in the system. Rather than pouring this material down the drain you can let the grease cool and pour into a container, such as an old mason jar, milk bottle etc, and then toss it in the trash.

## **Safe Management of Sharps**

Sharps, such as insulin needles, should not be placed loosely in trash containers.

To assist with proper disposal:

- Lancaster County Solid Waste Management Authority (LCSWMA) provides residents with a free Safe Clip™. This device holds 1,500 needles and safely stores them in an attached receptacle. When full, Safe Clips can be disposed of as regular trash.
- Residents may, if they prefer, put the entire syringe in a heavy plastic container with a lid (an empty liquid detergent container works well for this), mark the container with a permanent marker "Sharps - Not for Recycle" and dispose of the container as regular trash when it is full. The Elizabethtown Police Department, through the Prescription Drug Take Back program, will also accept syringes along with pills, gel tabs, liquid prescriptions, inhalers and medical patches. Material through this program can be dropped off during normal business hours.



# Winter Weather & Snow Emergency

## Winter Weather

The Borough's public works crew perform snow removal and de-icing operations whenever road conditions call for these services. With winter just around the corner please remember:

- If at all possible, move any cars parked on the street to your garage or driveway. This will assist with plowing of the streets. Please also avoid parking on any cul-de-sacs.
- Snow and ice is to be removed from sidewalks within 12 hours of the end of a snow storm.
- Depending on the storm, if changes to the trash and recycling collection schedule are needed, changes will be posted to the Borough's website and Facebook.

Above all, please be patient and allow our employees time to do their jobs when plowing streets. Safe streets are a primary concern for the Borough during the winter months.

## Snow Emergency Routes

According to Borough ordinance, after any snow emergency is declared and at any time during the continuance of the emergency, it shall be unlawful for anyone to drive a vehicle (unless it is equipped with snow tires or chains) or park a vehicle on a snow emergency route.

These restrictions assist Borough crews and emergency personnel in combating the hazards of snow and ice and facilitate the movement of traffic on the snow emergency routes.

The following streets are designated as snow emergency routes in Elizabethtown Borough:

- ~ High Street - the entire length
- ~ Market Street - the entire length

- ~ College Avenue - Market Street to Spruce Street
- ~ Spruce Street - College Avenue to Willow Street
- ~ Willow Street - Spruce Street to Market Street



If a snow emergency for Elizabethtown Borough is declared, information on its implementation and duration will be announced through local media outlets, with a SWIFT911 call, and posted to the Borough's website and Facebook.

## Winter Weather Traffic Safety

As the weather starts to turn colder and the days are getting shorter, it's time for a few reminders about wintertime traffic safety. According to the driver's safety website Lightfoot, a car's braking distance can be up to 10 times longer on ice and snow than it is on dry pavement. When a car is driving in the wintertime it can take 75 feet or more to stop at 30 miles per hour! And the faster one is driving, the longer it takes to stop.

Drivers also need to make sure they clean the ice and snow from the windows before driving. Not only is it a safety issue, it's also against the law. Drivers can receive a citation for driving without cleaning the windows, and it could cost you a lot of money! Even more dangerous, though, is that the snow and ice could fly off and cause a crash. Under PA Vehicle Code, if the snow or ice from a driver's car causes an injury crash, the driver will be held liable in criminal court, and could also be sued for a lot more than what the citation will cost.

If you have any questions about winter weather traffic safety or any other traffic safety issue, please feel free to give Chief Cunningham a call at the police station!

# 2019/2020 Trash and Recycling Summary

## Curbside Collection

For trash, each residential unit is permitted two 32-gallon containers per week and each container may weigh no more than 30-pounds. Any additional refuse container requires an extra service tag.

A container can be:

- A receptacle which is plastic, metal or fiberglass having handles for lifting and a tight-fitting lid to prevent entrance into the container by insects and rodents.

- A polyethylene bag designed for storage and collection to prevent littering and has a holding strength capable of withstanding normal stresses until it is collected.

For recycling, each residential unit may use a container (or multiple containers) of choice no larger than 32-gallons in size and weighing no more than 30-pounds. Container(s) are to be marked with a recycling sticker, available at the Borough Office.

Have you heard?  
Recycling has changed in Lancaster County.



JUST FOCUS ON THE **BIG 4** & PLACE ONLY THESE ITEMS IN YOUR BIN.

1	2	3	4
			
CORRUGATED CARDBOARD	PLASTIC BOTTLES & JUGS WITH NECKS	METAL FOOD & BEVERAGE CANS	GLASS JARS & BOTTLES
Flattened	Emptied, Rinsed, & Lids Removed		

All other items do not belong in your recycling bin.



It's okay to throw **everything else** away. It will be turned into energy.  
Lancaster County has an advanced waste-to-energy process that converts these materials into renewable energy, powering local homes and businesses and helping to reduce our reliance on non-renewable sources of energy. So, when in doubt, throw it out.

[recyclerrightlancaster.org](http://recyclerrightlancaster.org)

**RECYCLE RIGHT** Lancaster

Recyclable material is limited to the "Big 4" (corrugated cardboard, plastic bottles and jugs with necks, metal food and beverage cans and glass jars and bottles).

## Yard Waste Collection

Curbside collection of yard and woody waste is collected every other week on the same days as trash and recycling.

Yard and woody waste may be combined and placed in a non-disposable-container of the resident's choice.

Branches should be placed in a container or tied with biodegradable string in bundles up to 20" in diameter and less than 4' in length and placed at the curb. Bundles and containers should weigh no more than 30-pounds.

Containers are to be marked with a yard waste sticker which are available free of charge at the Borough Office.

# 2019/2020 Trash and Recycling Summary

## **Kraft Bags**

The Borough offers biodegradable Kraft bags to borough residents free of charge while supplies last. Residents may pick up Kraft bags from the Borough's Scout House in Community Park on Verdant Alley. Kraft bags are available now and supplies will be restocked as needed. Residents are asked to please take only the number of bags needed and limit each pick up to a maximum of 25 bags.

## **Directions to the Borough's Scout House**

Travel down Cherry Alley (behind the United States Post Office and BBT Drive-through). Turn left at the Stop sign onto Verdant Alley. The Scout House is the white building on Verdant Alley (26 Verdant Alley).

## **Oversized Item**

An oversized item is an item that does not fit into a trash container. One oversized item can be placed curbside per week with regular trash.

Items that are too heavy to be lifted into a truck by two people will not be accepted.

## **Extra Service Tags**

Service tags are to be purchased for:

- additional refuse containers (\$2.00);
- white goods (\$15.00); and
- tires (\$3.00)

Extra refuse service tags should be adhered to the top item inside the container or attached to the bag for collection. They are not to be attached to the container and re-used.



Extra service tags may be purchased at the Borough Office during normal business hours, Monday-Friday 7:30 a.m. - 4:00 p.m. Extra refuse service tags can also be purchased at local convenient and grocery stores in Elizabethtown.

## **Missed Collection**

As soon as you notice the oversight please call the Borough office (717) 367-1700. The missed collection will be reported to the hauler. Please note that collection material may be left if it is not

in a proper container (with stickers), if it does not contain an extra service tag, if the item is too heavy for pick up, or it is not the correct collection day (i.e. yard waste).



# At-A-Glance

## **Upcoming Holiday Trash Delays**

Thanksgiving, Christmas Day and New Year's Day fall on a regular collection day (Tuesday, Wednesday, or Thursday). For these days, pickup will be moved to Friday of that week. Collection for the day falling on the holiday is the only day that will be affected—no other change in collection that week will occur.

Thursday 11/28/2019 ~ Friday 11/29/2019  
Wednesday 12/25/2019 ~ Friday 12/27/2019  
Wednesday 01/01/2020 ~ Friday 01/03/2020

## **Leaf Collection**

Leaves can be placed in biodegradable Kraft bags or placed in a yard waste container and collected curbside as yard waste year round. Specific leaf collection dates for 2019 include:

-- November 12, 13, 14 -- November 19, 20, 21 -- December 10, 11, 12 --

## **White Goods and Tires**

The next curbside collection of white goods and tires is scheduled to occur on November 12, 13 and 14. The curbside collection is the same day as a resident's scheduled trash and recycling collection. A special service tag is required for each item. Tags are sold only at the Borough Office

## **Did you Know?**

Property owners may request to receive utility bills via email or have the amount due automatically withdrawn from a bank account. If you wish to pay your bill online, have an automatic withdrawal, or receive your bill via email please visit the borough's website (<https://www.ETownOnline.com/finance/pages/sewer-trash-billing>) or call the office for more information.

## **Holiday Closure Schedule**

Elizabethtown Borough Offices will be closed on the following dates in observance of holidays:

Thanksgiving (November 28 & 29, 2019)  
Christmas Day (December 25, 2019)  
New Years Day (January 1, 2020)  
Martin Luther King, Jr. Day (January 20, 2020)  
Presidents' Day (February 17, 2020)



Published Biannually by Elizabethtown Borough  
 Printed on Recycled Paper  
 Should not be duplicated without permission.  
 Editor: Ann Roda  
 Graphic Designer: Renee Olson  
[www.etownonline.com](http://www.etownonline.com)

Presorted Standard  
 U.S. Postage  
 PAID  
 Elizabethtown, PA  
 Permit No. 7

Elizabethtown Borough Bulletin  
 600 South Hanover Street  
 Elizabethtown, PA 17022  
 (717) 367-1700  
[www.etownonline.com](http://www.etownonline.com)

 <p><b>717-367-0355</b></p> <p><b>Programs &amp; Services Available</b></p> <ul style="list-style-type: none"> <li>• Recreation</li> <li>• Child Care</li> <li>• Senior Center</li> <li>• Community Center</li> </ul> <p><b>GetintoGEARS.org</b></p> <div>   </div>	 <p><b>Holiday Parade</b>          Sat., Dec 7          4 pm</p>	 <p><b>Fri., Nov 15</b>          6:30-8pm          GEARS Community Center</p>	 <p><b>Fri., Feb 7, 2020</b>          5-6:30 or 7-8:30 pm          Masonic Village Salon 1</p>
	<p><b>Senior Center</b></p> <p><b>Fall Bazaar &amp; Pancake Breakfast</b>          Sat., Nov 9          7 am - 1pm GEARS Community Center</p> <p><b>Basket BINGO</b>          Sat., Mar 2020 (Date TBD)          2 pm GEARS Community Center</p>		<p><b>Kids Center</b></p> <p>For ages 3-12</p> <ul style="list-style-type: none"> <li>• Preschool</li> <li>• Kindergarten</li> <li>• Summer Camp</li> <li>• Before &amp; After School</li> </ul> <p><b>717-367-0119</b></p> 
	<p><b>EGGSTRAVAGANZA</b></p> <p><b>SAVE THE DATE</b>          Sat., Apr 4, 2020          10 am @ E-town Community Park</p>  <p>Call or go online for details</p>		

For the latest information and updates of interest, be sure to visit our website at [www.etownonline.com](http://www.etownonline.com) or follow us on Facebook.