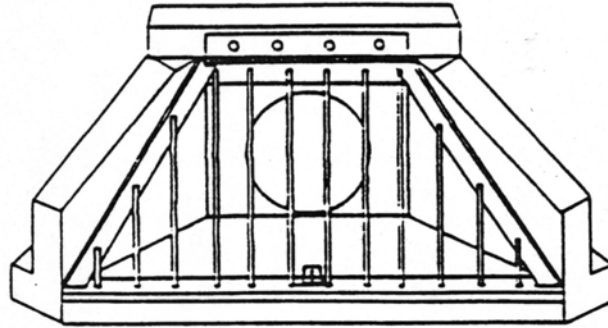


26 Attachment 8

Borough of Elizabethtown

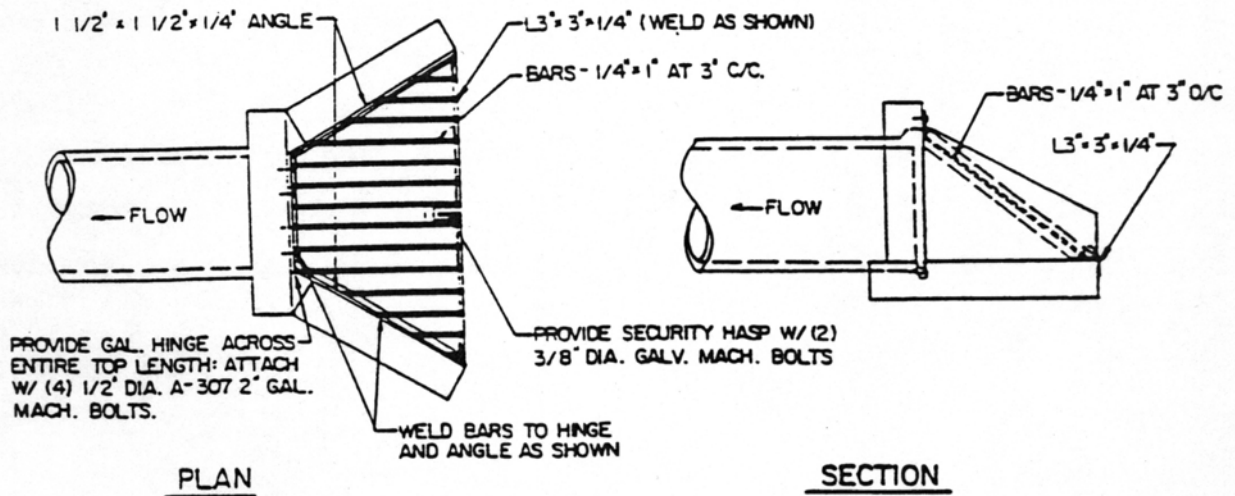
APPENDIX NO. 8



ISOMETRIC

NOTES:

1. MATERIAL TO BE: GALVINIZED, STEEL W/ RUST INHIBITOR, OR ALUMINUM.
2. DIMENSION APPROPRIATELY FOR HEADWALL UTILIZED.



TRASH RACK DETAIL (TYPE 'DW' HEADWALLS ONLY)
NO SCALE